

# LOCK SWITCH

## WIRL IP66/IP67 SEALED IMPULSION LOCK SWITCH

### ELECTRICAL & MECHANICAL SPECIFICATION

<b>Switch Rating:</b>	1A @115V ac.	<b>Life:</b>	>10,000 Cycles
(Resistive load)	1A @24V dc	<b>Operating Temperature:</b>	-20°C to +65°C
<b>Proof Voltage:</b>	750 Vac (Initial)	<b>Lock Type:</b>	5 Disc
<b>Insulation Resistance:</b>	>999MΩ @ 500Vdc (Initial)		
<b>Contact Resistance:</b>	<20mΩ (Initial)	<b>Lock Housing:</b>	Zinc Alloy Bright Cr Plated
<b>Contact Material:</b>	Brass CZ108, Ag Plated	<b>Moulding Material:</b>	Polyamide 6.6 G.F. V0 Rated

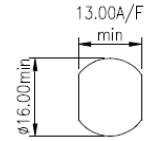
### FEATURES

Suitable for Marine Environment Exposure to Severity One (EN60068-2-52) salt mist tested

- Spring return
- Oil regularly if used outside
- Front assembly Double pole
- Rear panel depth - <30mm
- Made in UK

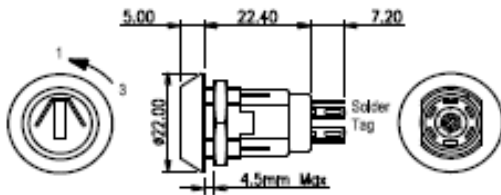
- 2 keys per switch
- Up to 200 differ key combinations available
- Keys are single entry (inserted and removed in position one)

#### PANEL PIERCING DETAILS



### DOUBLE POLE LOCK SWITCH

tapered lock head 60° indexing



### TAPERED LOCK HEAD 60° INDEXING

BASIC PART No.	TOTAL MOVEMENT	INDEXING	KEY WITHDRAWAL POSITIONS	SWITCH CONFIGURATION
WIRL-5-M-S-2	60°	60°	1 ONLY	
WIRL-5-M-D-2				